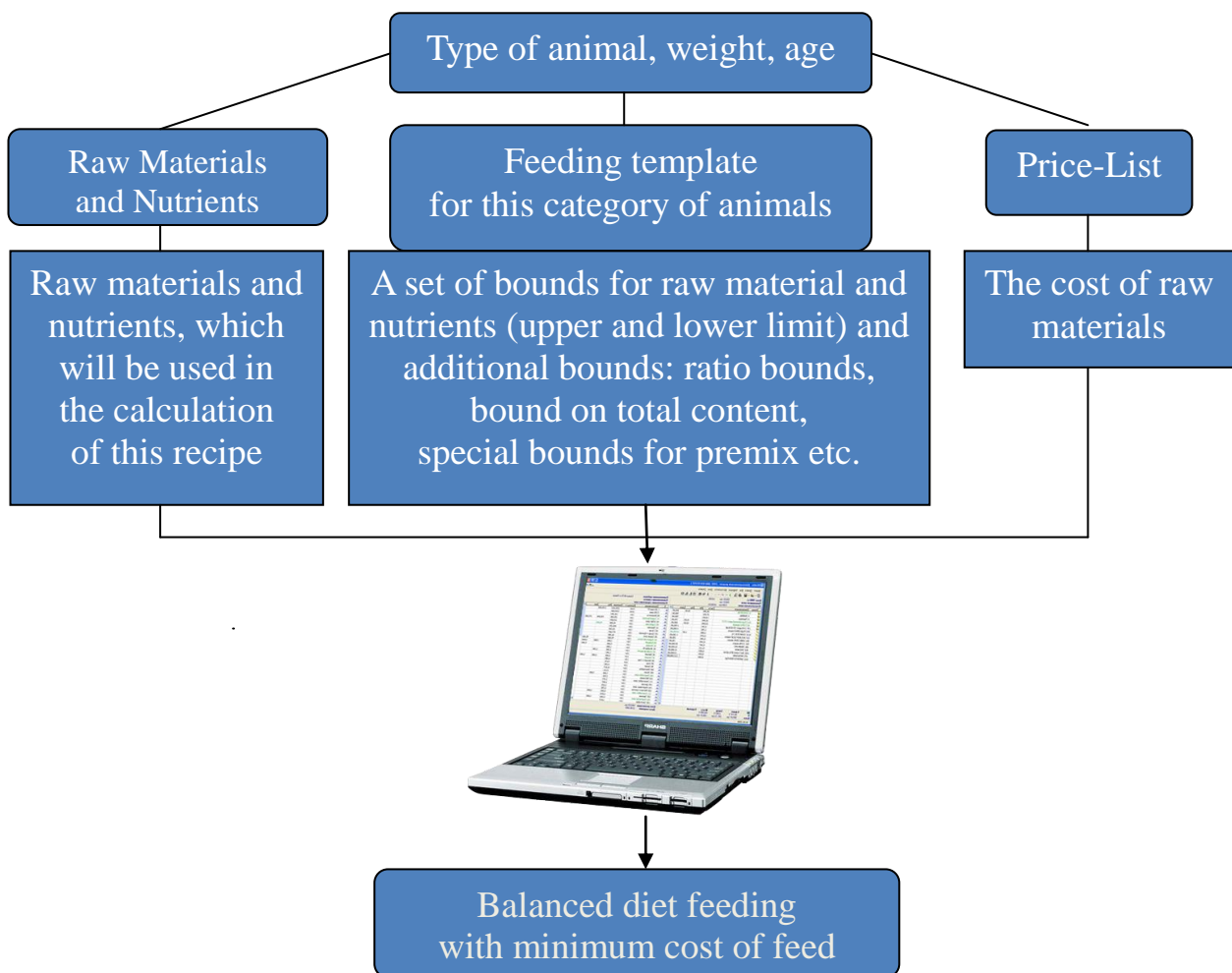


WinMix - a least-cost optimization program for the different types of animals



- Computer program – it's the best recipes at the lowest possible price: the guaranteed weight gain and increase of profits, including by reducing the cost of diet and proper redistribution of raw materials
- The program saves the time spent by your staff on the calculation of the diet because it allows you to make it easier and faster
- Own program is a significant competitive advantage, a guarantee that the issue of feeding is adjusted properly, it is cost-effective production
- The program has a moderate price, and the amount spent on the purchase WinMix, payback within a few days to few months of use, depending on the volume of production enterprises



WinMix will take into account everything what is important for your animals and give you the most optimum result.

1. Creating of Formula and Compound recipes.
2. Formulation supported with animal templates.
3. Formula calculating for different price-lists, clients and currencies.
4. Premixing instructions and feed additives.
5. Includes Cost elements Economics for production costs.
6. Possibility to set many types of additional bounds for fine adjustment of a formula.
7. "Shadow prices" tracking and post-optimization analysis.
8. Professional printouts
9. Working with several formulas simultaneously.
10. Data export and import to Excel and other formats.
11. Nutrient Pad.

The screenshot displays the MixManager Expert software interface. The window title is "MixManager Expert". The menu bar includes "File", "Edit", "View", "Go", "Raw materials", "Nutrients", "Calculate", and "Help". The toolbar contains icons for file operations, navigation, and data management. The left sidebar shows a tree view of the project structure, including "Raw Materials", "Groups", "Clients", "Templates", "Bills", "Currencies", "Nutrients", "Mills", "Balances", "Products", "Animals", and "Equations". The main workspace is divided into two panes. The left pane, titled "Raw Materials", displays a table with columns "N", "Name", and "Article Basic Link". The right pane, titled "All Nutrients", displays a table with columns "N", "Name", "Units", "Main", and "Laboratory".

N	Name	Article Basic Link
1	BARLEY heavy	
2	BARLEY light	
3	JECAM	
4	BARLEY pel	
5	BARLEY '98	
7	PSENICA	
8	WHEAT light	
9	WHEAT enzymes	
10	WHEAT pel	
12	TRITIKALE	
13	TRITICALE pel	
14	WHEAT BEARDED	
17	OATS	
18	OATS black	
19	WHEAT '98	
21	KUKURUZ	
22	KUKURUZ 8,5% PROTEINA	
23	KUKURUZ TEHNOOPREMA	
26	RAĤ	
27	RYE pel	
28	MILLET	

N	Name	Units	Main	Laboratory
1	NEswine97	kcal	2208,600	
2	NEswine97	MJ	9,240	
3	NEswine (Ros)	kcal	2255,500	
4	NEswine (Ros)	MJ	9,440	
5	MEswine	kcal	3082,700	
6	MEswine	MJ	12,900	
7	DEswine	kcal	3130,800	
8	DEswine	MJ	13,100	
9	MElayer	kcal	2804,600	
10	MElayer	MJ	11,730	
11	MEpoultry	kcal	2785,900	
12	MEpoultry	MJ	11,660	
13	MEbroiler	kcal	2339,600	
14	MEbroiler	MJ	9,790	
15	MEeu lay	kcal	2690,000	
16	MEeu lay	MJ	11,260	
17	VEMcatt		977,420	
18	VEVlcat		1068,100	
19	UFL	U/kg	0,999	
20	UEV	U/kg	0,996	

WinMix Soft Ltd. • +380 (44) 331-56-51 • info@winmixsoft.com • <http://www.winmixsoft.com>